



## Courses & Training

### What is it

Masters/Post Graduate Diploma

### When is it

September 2024

### Where is it

NSCAP, Leeds

### What does it cost

£6,468 per year

# Psychoanalytic Observational Studies

## Programme Outline

Psychoanalytic Observational Studies is a part-time course which takes place in small-group seminars one day a week on Fridays.

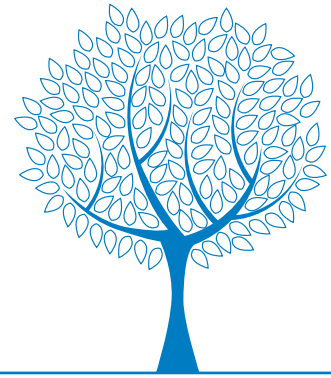
The Postgraduate Diploma takes 2 years to complete and the Masters is an additional 3rd year. Studying individual modules as CPD is also available.

### The programme content broadly divides into two areas:

1. The close psychoanalytic observation of infants and young children in their home or care setting and the application of psychoanalytic observation to the student's work setting and professional role.
2. Reading seminars and presentations on the historical underpinnings of theory and research in psychoanalysis, and seminal and contemporary studies in child development and the relational mind.

Completion of this course is a pre-requisite in order to be eligible to apply for the clinical training in Child and Adolescent Psychotherapy.

Continued on the next page...



## Modular Structure

### **Infant Observation (2 years)**

Students will observe an infant's development from birth until their second birthday. This will be within the context of the infant's emotional relationships in an ordinary family and in their particular cultural context. This is a weekly observation for one hour in the infant's home. Every observation is written up in detail afterwards and discussion takes place in small group seminars focussing on the unconscious elements of emotional and relational development.

### **Work Observation (2 years)**

The experience of work is studied through close observation. The significance of unconscious dynamics, the multi-layered meaning of behaviour and the emotional responses of the worker are central to learning. This is considered in relation to the work setting, including the expectation and the pressures of the organisation in which students work, the experience of teamwork, and the student's professional role.

### **Psychoanalytic Theory & Personality Development (2 years)**

A critical understanding of the development of psychoanalytic theory using a range of primary texts is explored through fortnightly reading seminars. Alongside this there are 7 Personality Development workshops which take place on Saturdays. Students will be invited to think about the interplay of internal and external factors which underlie the development of personality through the life-cycle.

### **Child Development and the Relational Mind (1 year)**

Through a developmental framework, this module examines the complex inter-related play of mind/body to make sense of the micro-interactions between the developing child and their caregivers, through a fortnightly reading seminar. Methodological approaches are discussed to understand the dialogue between psychoanalytic observation and developmental psychology.

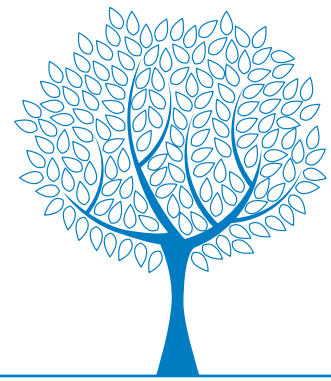
### **Young Child Observation (1 year)**

Based on the principles of infant observation, students are required to observe weekly for one year a pre-school child in a day care setting. Focus on an individual child and the child within the group is central in learning about the impact of widening social horizons and burgeoning language development.

### **Dissertation (1 year)**

Students going on to complete the Masters will be required to write a dissertation investigating a theme or topic of interest that has arisen from their observations and studies on this programme.

Continued on the next page...



### Learning Outcomes

1. Deepen and extend understanding of human development from a psychoanalytic perspective.
2. Develop an openness to imagine the unconscious experience of infants and young children in understanding their emotional and personality development.
3. Apply psychoanalytic observation in work with children/adolescents, within organisational settings to develop insights and enrich professional practice.

### Who should apply

The course is for professionals working with infants, children, young people and their families with an interest in emotional development and extending and deepening their professional practice. The course is relevant to a wide range of professionals including teachers and teaching assistants, mental health practitioners, nursery nurses, social workers, support workers, youth workers, nurses/midwives, psychologists, psychiatrists and allied professional disciplines

### Entry Requirements

To undertake this course, it is required that you have:

- a minimum of 12 months full-time experience of infants, children, young people and their families in a professional role prior to commencing the course
- an honours degree or the ability to demonstrate that you can meet the academic demands of the course
- an interest in learning about psychoanalytic perspectives and willingness to engage in experiential learning

### Date

The next intake of students will be in **September 2024**.

### Times

Fridays - 33 weeks per year

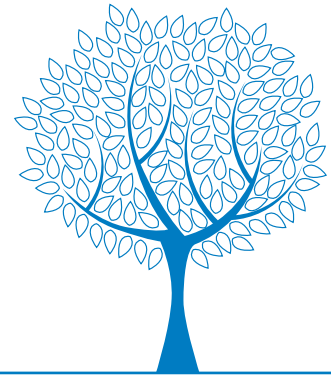
### Venue

NSCAP, Leeds

### Validation

This post graduate course is accredited by the University of Leeds.

Continued on the next page...



### Course Fees

£6,468 per year for the first and second year (Postgraduate Diploma)  
£2,196 for year 3 for the (Masters)  
£497 for the Saturday Personality Development Seminars

There are a range of ways to pay your fees, including self funding, employer funding. Students on this programme are also eligible to apply for a Postgraduate loan.

NB these prices are valid for 2024/25

---

### Funding Options

#### NEW FOR 2024-2025

In 2024-2025 NHS England will be introducing a new scheme to fund places on the programme for NHS employees.

In 2024-25 a new option is being introduced by NHS England to fund places for NHS employees who have an interest in applying for the Clinical Training in Child and Adolescent Psychotherapy at a future point.

Further details regarding this scheme, including eligibility criteria, will be available in due course.

Details regarding the potential availability of NHS England Equality Diversity and Inclusion (EDI) bursary will be updated in due course.

---

### How to Apply

Please visit: [www.nscap.org.uk/content/courses-and-training](http://www.nscap.org.uk/content/courses-and-training) for a link to the Leeds University applications webpage.

The closing date for applications is **Friday 15th March 2024**.

Students are considered on the basis of application forms, references, relevant work experience, and personal interviews.

Applications will open in February 2024

---